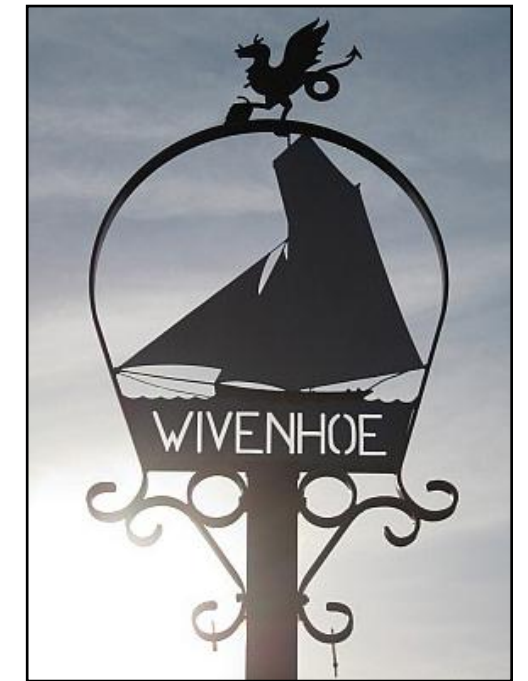




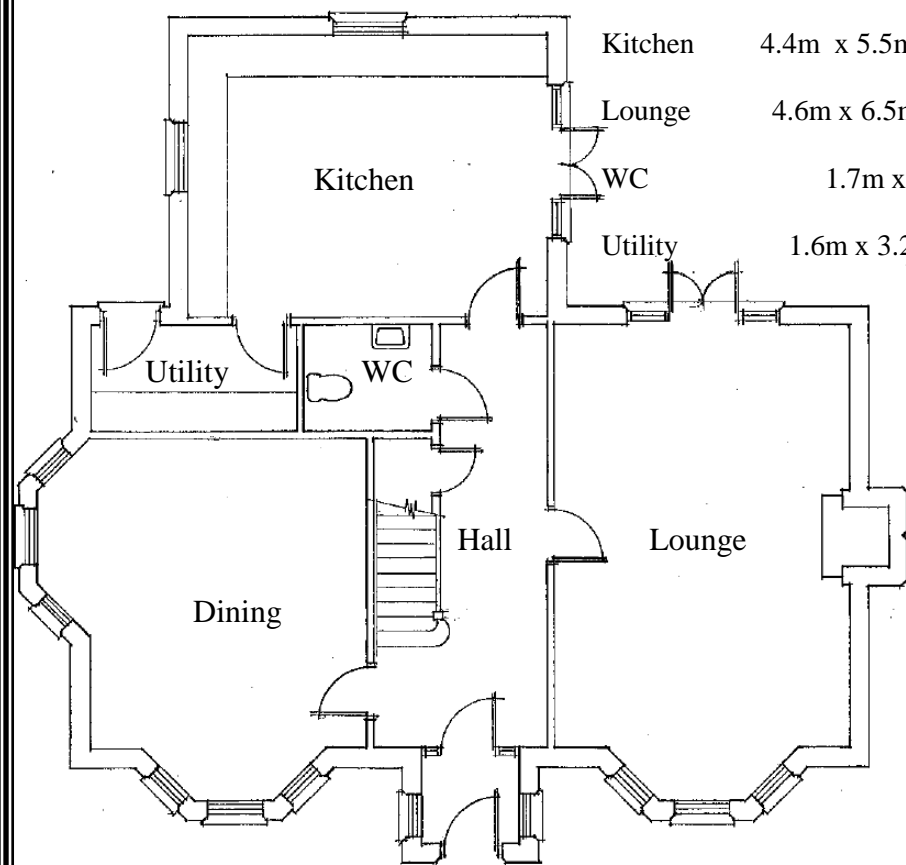
Holly House (Plot 8)

**Palmer Gardens
The Avenue
Wivenhoe**



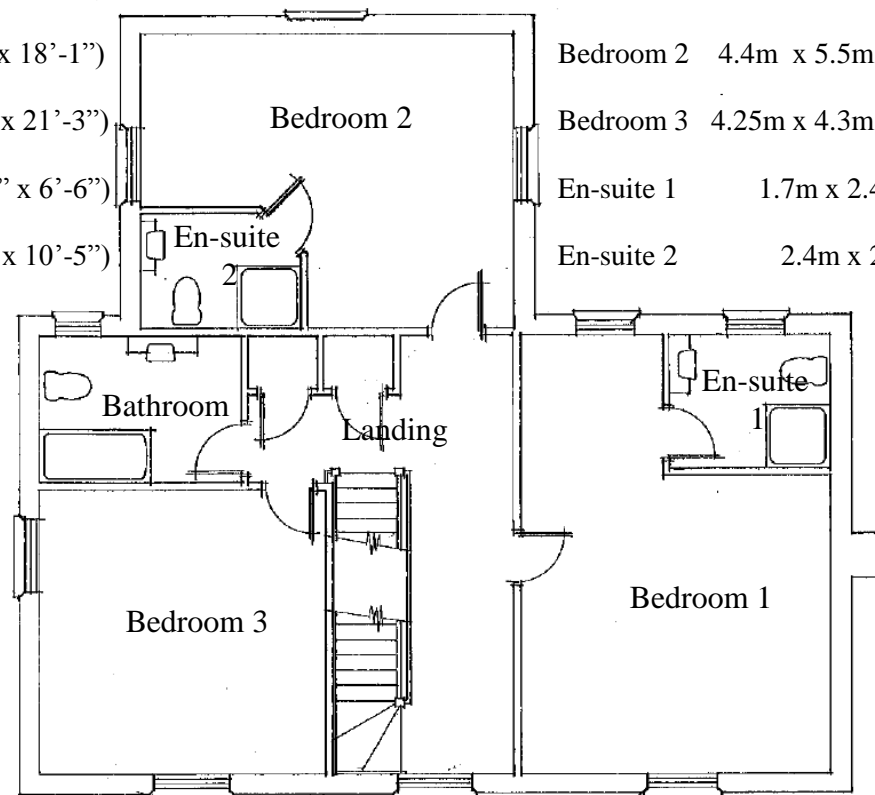
Ground Floor

Dining	4.3m x 4.8m (14'-1" x 15'-8")
Hall	2.7m x 6.7m (8'-8" x 22')
Kitchen	4.4m x 5.5m (14'-4" x 18'-1")
Lounge	4.6m x 6.5m (15'-1" x 21'-3")
WC	1.7m x 2m (5'-6" x 6'-6")
Utility	1.6m x 3.2m (5'-3" x 10'-5")



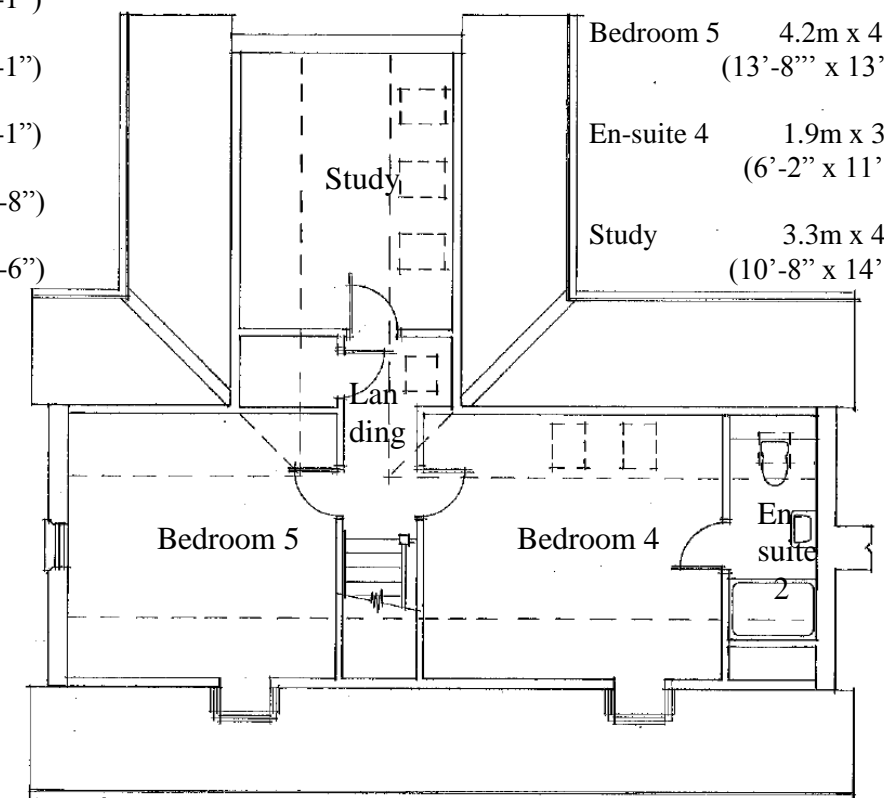
First Floor

Bathroom	2.2m x 3m (7'-2" x 9'-8")
Bedroom 1	4.5m x 4.6m (18'-8" x 15'-1")
Bedroom 2	4.4m x 5.5m (14'-4" x 18'-1")
Bedroom 3	4.25m x 4.3m (13'-9" x 14'-1")
En-suite 1	1.7m x 2.4m (5'-5" x 7'-8")
En-suite 2	2.4m x 2m (7'-8" x 6'-6")



Second Floor

Bedroom 4	4.7m x 4.2m (15'-4" x 13'-8")
Bedroom 5	4.2m x 4.1m (13'-8" x 13'-5")
En-suite 4	1.9m x 3.5m (6'-2" x 11'-5")
Study	3.3m x 4.4m (10'-8" x 14'-4")



Total Area – 273m² (2938ft²)

Please note that layout and elevation aspects may vary from those shown here and that the room sizes are approximate. The right is reserved by the company to amend any area of the relevant property.

VAUGHAN & BLYTH
Quality Homes, Naturally
01206 791660