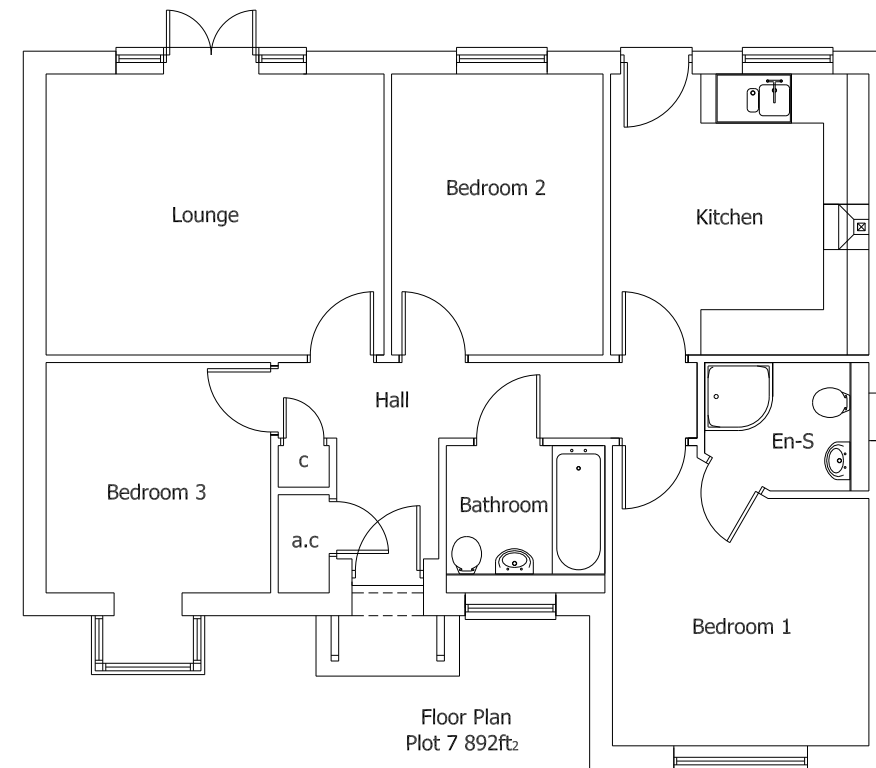


Floor Plan  
Plot 1 892ft<sup>2</sup>

**Plots 1,3,4&7 Dimensions:**  
(All dimensions are approximate only)

- Lounge - 4.38m x 3.62m - 14' 4" x 11' 11"
- Kitchen - 3.62m x 3.32m - 11' 11" x 10' 11"
- Bedroom 1 - 3.88m x 3.3m - 12' 9" x 10' 10"
- Bedroom 2 - 3.62m x 2.7m - 11' 11" x 8' 10"
- Bedroom 3 - 2.95m x 2.87m - 9' 8" x 9' 5"
- Bathroom - 2.0m x 1.85m - 6' 7" x 6' 1"



Floor Plan  
Plot 7 892ft<sup>2</sup>